

# The Katherine - 56.16m<sup>2</sup>



Brought to you by

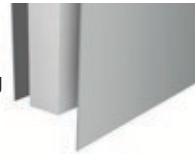
**Conway Contracting**  
**Mobile: 0413 834 660**  
**Email: [steve@conwaycms.com.au](mailto:steve@conwaycms.com.au)**



## THE KATHERINE INCLUSIONS

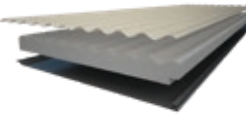
### •PANELSPAN<sup>®</sup> Insulated Wall Panel

PANELSPAN<sup>®</sup> insulated panel system for external and internal walls. PANELSPAN<sup>®</sup> Insulated Panel System is manufactured using grooved fibre cement external sheeting and recessed edge fibre cement internal sheeting



### • INSULSPAN<sup>®</sup> Insulated Roof Panel

INSULSPAN<sup>®</sup> panel is manufactured using external corrugated COLORBOND<sup>®</sup> or ZINCALUME<sup>®</sup> profile sheets in a choice of 21 standard colours and an internal flat COLORBOND<sup>®</sup> skin in white only



### • Aluminium windows and sliding doors are available in a large range of coloured frames. They are designed and glazed in accordance with relevant Australian Standards.

### •Pre-hung internal timber doors and jambs

### •COLORBOND<sup>®</sup> trims, cappings, flashing and rainwater products

### •Blue Core Steel framing system

### •Fixing and fasteners to assemble your Quick Built Home

### • Council on placement of an order you will receive information package for council application and construction preparation.

- Structural plans and specifications
- Structural engineering certification
- Detailed construction manual

## THE KATHERINE EXCLUSIONS

### •DELIVERY Due to all the different site locations and site terrains, delivery is POA

### •COUNCIL FEES are not included

### •FOUNDATIONS Footing engineering is available for certain sites, please ask for details

### •CONSTRUCTION Installation is not included

### •SERVICE & FITTINGS Plumbing and electrical services, connections and fittings

are not included

### •FLOORING AND COVERINGS Flooring, floor covering, decking and stairs are not included

### • KITCHENS & BATHROOMS are not included giving you the opportunity to design your own within your own taste and budget



## PRICING

Kit Price **\$48,870**

Optional QS modular steel flooring system Including SHS Piers and excluding flooring and decking **\$11,286**

## SPECIFICATIONS

	Width	Depth
Overall	8.4m	7.2m
Living	7.2m	3.6m
Bedroom	3.6m	3.6m
Bathroom	1.2m	2.7m
Patio	3.6m	1.2m

## WINDOW / DOOR SCHEDULE

Window Quantity	Horizontal Dimension	Vertical Dimension	Window Type
1	1200	1000	Aluminium Frame Sliding
3	1200	1200	Aluminium Frame Sliding
1	800	300	Aluminium Frame Sliding
Door Qty			
1	1800	2100	Aluminium Sliding 2 panel

**QUICKBUILT**



**Conway Contracting**

Builders Lic No: 305017C  
 ABN: 33024022672