

# The Villa - 30.24m<sup>2</sup>



Brought to you by

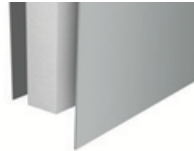
**Conway Contracting**  
**Mobile: 0413 834 660**  
**Email: [steve@conwaycms.com.au](mailto:steve@conwaycms.com.au)**



## THE VILLA INCLUSIONS

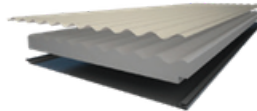
### •PANELSPAN® Insulated Wall Panel

PANELSPAN® insulated panel system for external and internal walls. PANELSPAN® Insulated Panel System is manufactured using grooved fibre cement external sheeting and recessed edge fibre cement internal sheeting



### • INSULSPAN® Insulated Roof Panel

INSULSPAN® panel is manufactured using external corrugated COLORBOND® or ZINCALUME® profile sheets in a choice of 21 standard colours and an internal flat COLORBOND® skin in white only



### • Aluminium windows and sliding doors are available in a large range of coloured frames. They are designed and glazed in accordance with relevant Australian Standards.

### •Pre-hung internal timber doors and jambs

### •COLORBOND® trims, cappings, flashing and rainwater products

### •Blue Core Steel framing system

### •Fixing and fasteners to assemble your Quick Built Home

### • Council on placement of an order you will receive information package for council application and construction preparation.

-Structural plans and specifications

-Structural engineering certification

-Detailed construction manual

## THE VILLA EXCLUSIONS

### •DELIVERY Due to all the different site locations and site terrains, delivery is POA

### •COUNCIL FEES are not included

### •FOUNDATIONS Footing engineering is available for certain sites, please ask for details

### •CONSTRUCTION Installation is not included

### •SERVICE & FITTINGS Plumbing and electrical services, connections and fittings are not included

### •FLOORING AND COVERINGS Flooring, floor covering, decking and stairs are not included

### • KITCHENS & BATHROOMS are not included giving you the opportunity to design your own within your own taste and budget



## PRICING

Kit Price *On Request*

Optional QS modular steel flooring system Including SHS Piers and excluding flooring and decking *On Request*

Insulspan Patio *On Request*

Slimline Patio *On Request*

## SPECIFICATIONS

	Width	Depth
Overall	8.4m	3.6m
Living	7.2m	3.6m
Bathroom	1.2m	3.6m
Patio	8.4m	3.0m

## WINDOW / DOOR SCHEDULE

Window Type Aluminium Frame Sliding

Window Quantity	Horizontal Dimension	Vertical Dimension
1	1200	1200
1	800	300

Door Qty

1	3600	2100	Aluminium Sliding 2 panel
---	------	------	---------------------------

**QUICKBUILT**



**Conway Contracting**

Builders Lic No: 305017C  
 ABN: 33024022672